

## Indefinite Chill Double Poured (ICDP)

### Field of Application

Mill Type	Position
Hot Strip Mill	Late Finishing Stands Work Roll
Narrow Strip Mill	Late Finishing Stands Work Roll
Steckel Mill	Work Roll
Plate Mill	Work Roll

### Mechanical properties

Hardness Range	70-80 ShC
Tensile Strength	> 400 MPa
Bending Strength	> 700 MPa
Young's Modulus	approx. 170.000 MPa

The microstructure of standard indefinite chill roll consists of  $M_3C$  type eutectic carbides and free graphite in a tempered martensitic/bainitic matrix.

This alloy is characterized by good wear resistance and very good resistance towards mill accidents.

The amount of free graphite in the rolls can be adjusted to specific mill requirements by variation of the inoculation. Therefore, it is possible to customize roll properties for each mill.

### Product Highlights

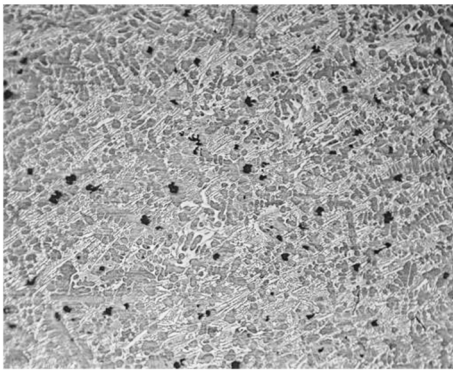
- Good wear resistance
- Good Fire Cracking Resistance
- Insensitive to rolling mill accidents



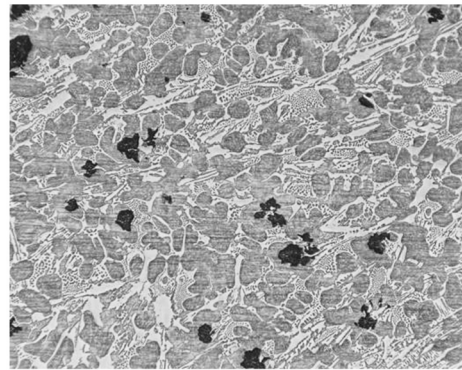
## Chemical Composition:

	C	Mn	Si	P	S	Ni	Cr	Mo	Nb + V + W
<b>Min</b>	2.80	0.50	0.50	0	0	3.00	1.00	0.30	0
<b>Max</b>	3.50	1.30	1.50	0.10	0.050	5.00	2.00	3.00	0.50

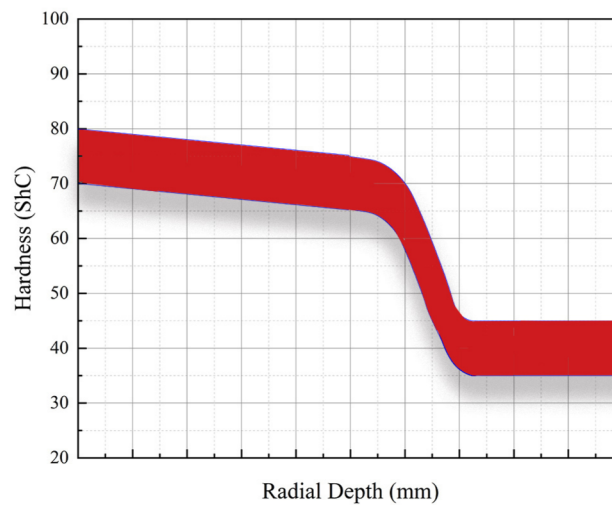
## Microstructure:



40 X – etched (Nital)



100 X – etched (Nital)



## Contact Us:

Roll Nova – Izmir / Turkey

Homepage: [www.rollnova.com](http://www.rollnova.com)

Email: [sales@rollnova.com](mailto:sales@rollnova.com)